

BATTERY CHANGING

You will need a flat-headed screwdriver (provided in box).

1. Place the instrument display-down on a solid surface.
2. Unscrew and remove the battery cover.
3. Remove batteries (top one first).
4. Fit new batteries, noting the polarities marked on the plastic.
5. Replace battery cover, then tighten battery screw.
6. Dispose of the old batteries appropriately.

If this is the first time the instrument has been used then it will need setting up in ThermaData Studio. If it has previously been used then it will attempt to reconnect to the WiFi and continue recording.

WARNING: IPA and other solvents may cause damage to the case and screen of this instrument.

INSTRUMENT RECORD CARD FOR THERMADATA® HUMIDITY INSTRUMENTS ONLY

	REFERENCE	INSTRUMENT
TEMPERATURE		
HUMIDITY		

Serial No. _____

Calibrated by _____ Date _____

This instrument has been checked or calibrated against reference instrument(s) calibrated by a UKAS Accredited Calibration Laboratory.

PLEASE NOTE: Due to regular software updates, please visit the download page on our website etiltd.com/downloads to ensure you have the latest version.



Manufactured by
Electronic Temperature Instruments Ltd
Worthing · West Sussex · BN14 8HQ
01903 202151 · sales@etiltd.com · etiltd.com

545-922/11.02.19



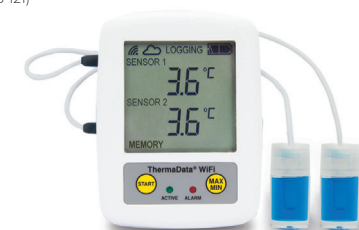
THERMADATA® WIFI



ThermaData TD2TC (298-121)



ThermaData TDIF (298-011)



ThermaData Pharm (298-111)



ThermaData Humidity (298-621)

Quick Start Guide

SETTING UP

Insert 2 x AA batteries. The instrument will display 'Start WP' followed by 'need connect'

CONNECTING THE DEVICE TO THE INTERNET VIA A MOBILE PHONE OR TABLET

1. Install the ThermaData Studio software on your PC via the download page on the ETI website
2. Hold 'Start' and 'Max/Min' buttons until logger LCD displays 'Start WP'
3. Go To Wi-Fi setting within your mobile or tablet and scan for available networks.
4. Locate the item that corresponds to your ThermaData WiFi device. It will contain the serial number printed on the rear label of your device. (For example: ThermaData WiFi D17061188)
5. Once connected to the ThermaData WiFi, use the mobile/tablet's browser and either enter <http://my.thermadatawifi> or <http://192.168.1.1>



IMPORTANT: this page will only load correctly, if the logger still says 'Start WP' & the mobile/tablet is connected to the ThermaData WiFi's 'hotspot'.

You will be directed to a ThermaData WiFi Configuration page:

1. Select the appropriate WiFi network that you wish to connect to e.g. Production. (fig.a)
2. Enter password for the network.
3. Once all the information is entered click 'Save Configuration' (fig. b)
4. The device is now connected to the WiFi network (fig.c)

Configure WiFi Network



Fig. a

Checking settings...

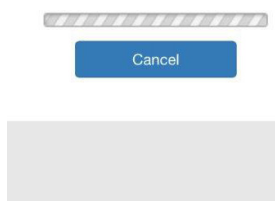


Fig. b

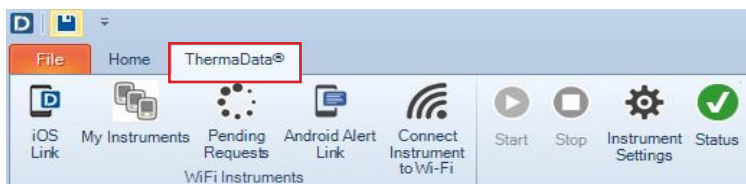
Connected OK



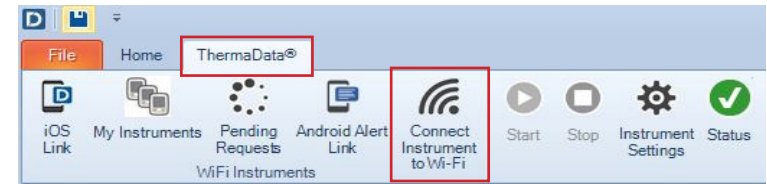
Fig. c

CONNECTING THE DEVICE TO THE INTERNET USING THE USB CABLE

1. Open ThermaData Studio and select 'ThermaData®'

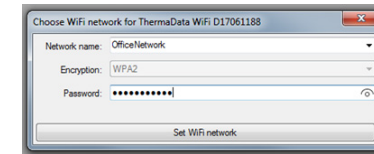


2. Connect the ThermaData WiFi to a PC or a laptop via the USB cable provided
3. Click on 'Connect Instrument to WiFi'



4. Select appropriate WiFi connection from the drop down menu and enter the necessary details

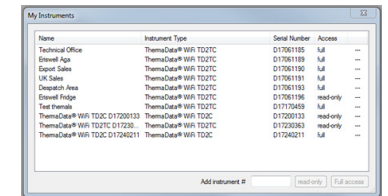
(Wait for the green bar to load across, whilst the software scans for available networks)



The device will connect and display a WiFi signal indicator  and a cloud  in the top left hand corner of the device's LCD within a few seconds.

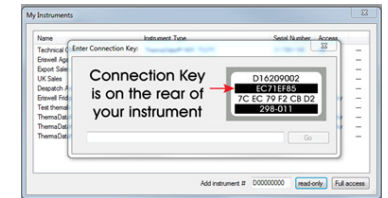
PAIRING THE DEVICE TO THERMADATA STUDIO

Click 'My Instruments' and input the instrument serial number in the 'Add Instruments #' text box. (The serial number can be found on the rear label of the instrument)



READ ONLY

1. If selecting 'Read Only' the user will have limited access to the device and can only view information – not adjust.
2. Select 'Read-Only' and enter the 8 Digit Connection Key on the rear of the unit (2nd row)



FULL ACCESS

1. If selecting 'Full-Access' the user will have unlimited access to the device and can adjust settings.
2. Select 'Full-Access', you will be prompted to press the 'Start' button on the instruments front panel 5 consecutive times, this will then give you a unique pairing code, enter this code into the text bar on the window.

